


NOTE- PERFORMANCE AS PER ISO 9906 GRADE-2B

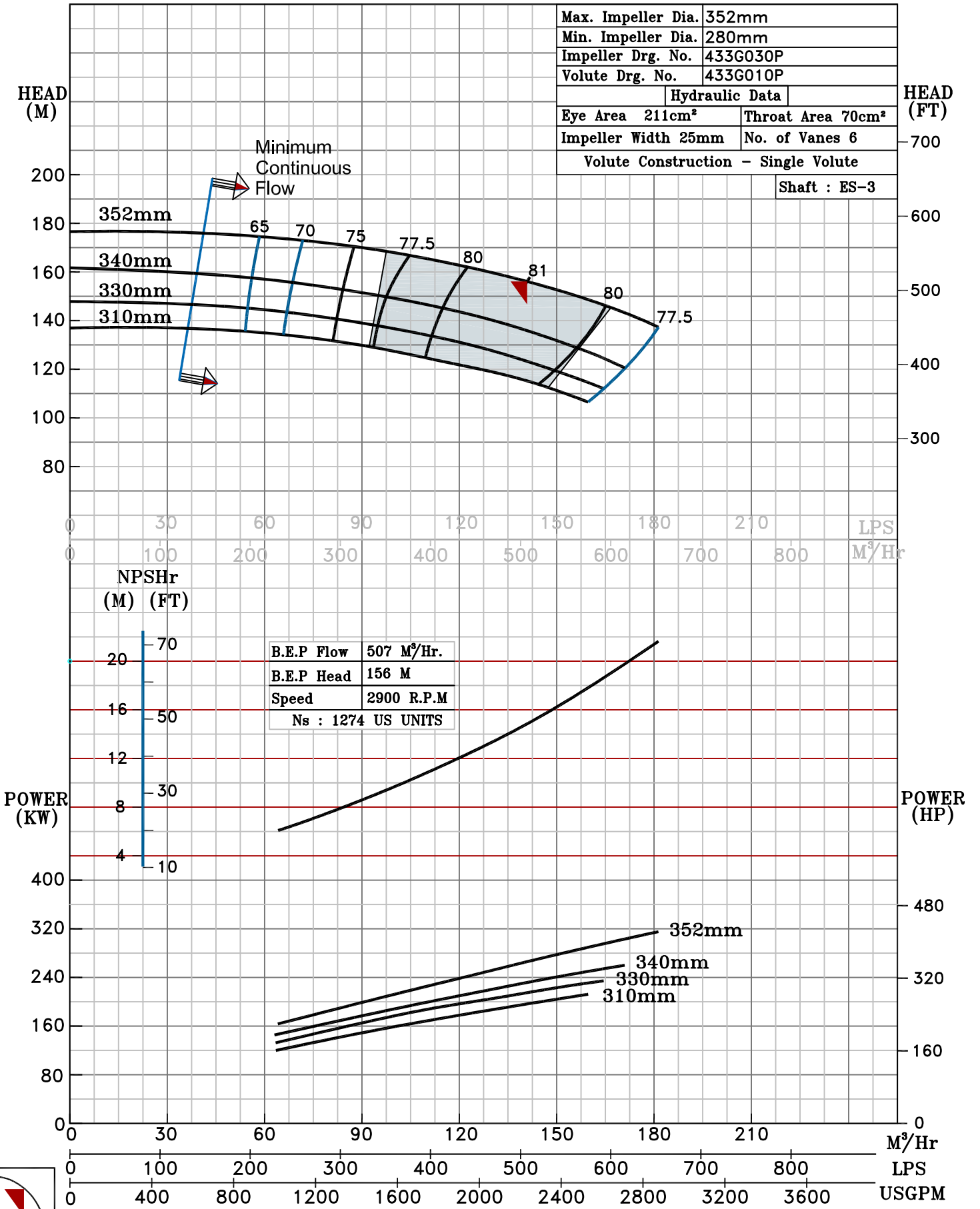
PERFORMANCE CURVE OF ES 125-400 @2900 R.P.M		ES 125-400/X/403352	
 PUMPSENSE ISO 2858 ES RANGE	MODEL ES 125-400	WORKING PRESS.	24 bar
	SIZE 150x125-352	TEST PRESS.	36 bar
	TYPE - END SUCTION BACK PULL OUT		
			SPEED 2900 rpm

SHADED REGION ON THE H-Q CURVE REPRESENTS OPTIMUM SELECTION ZONE

DATE - 31.05.18

PUMP PERFORMANCE CHARACTERISTICS COMPUTED BASED ON CLEAN COLD WATER S.G 1.0

Max. Impeller Dia.	352mm
Min. Impeller Dia.	280mm
Impeller Drg. No.	433G030P
Volute Drg. No.	433G010P
Hydraulic Data	
Eye Area 211cm ²	Throat Area 70cm ²
Impeller Width 25mm	No. of Vanes 6
Volute Construction - Single Volute	
Shaft : ES-3	



2900 RPM